

## N-BM70W Pro Ultimate Multi Bio



Face



Finger



RFID



Inbuilt Battery



WiFi



LAN



USB

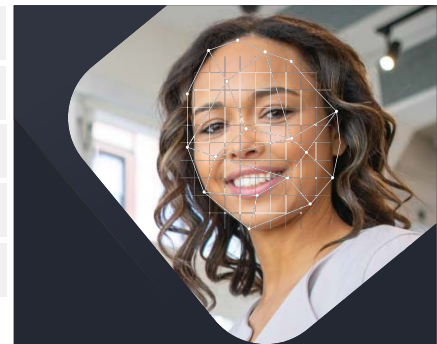


Access Control

## Multi-Bio Attendance and Access Control System

### Storage Capacity

Face Capacity	1200 (1: N)
Finger Capacity	5000
Card User	1200
Max User	1200
Log Capacity	1,50,000



### N-BM70W Pro

"With Impressive features leveled up to meet your demands."

### Features

High-Speed and Accurate Face Identification

Good adaptation for dry, moist and rough fingerprints.

Output relay for door open.

Face, Fingerprint, Card, Password authentication

Supremely low Electric energy consumption.

Highly reliable and durable.

Comprehensive SDK is available for development and integration.

# N-BM70W Pro

## Communication Interface

Communication	Wi-Fi, TCP/IP, USB Host
---------------	-------------------------

## Biometric

Push Data	YES
Sensor type	500 DPI
FAR	0.00001%
FRR	0.001%
OS	Linux
Verification time	<1 second
RF card options	125kHz EM (Standard) / 13.56MHz Mifare (Optional)

## Audio/Visual

LCD	2.8" TFT color screen
LED Indicator	Green/Red
LED for day night vision	Array LED
Voice instruction	16-bit Hi-Fi voice & sound indication
Language	English

## Access control

Relay	YES
Support Exit Reader	Remote, Push Button, No Touch

## Power & Enviroment

Inbuilt Battery Backup	YES (BIS standard)
Power	12V 2Am (BIS standard)
Operating Temperature	0°C ~ 50°C
Operating Humidity	20% - 80%
Dimension	160 x 150 x 65 mm



Auto Focus



low light Verification



Long Distance Verification



Accepts Color Finger

Software

Desktop, Web, Cloud



Time Attendance



Access Control



Employee Self Service



Mobile App

**Disclaimer** : Brief specifications are mentioned here. specification may change without prior notice. Customers are advised to check with us before purchase. Actual product may differ slightly to that depicted for ongoing product development.

Connect with us on



BiomaxOfficial



BioMax Security



biomaxsecurity



BioMax Access Control